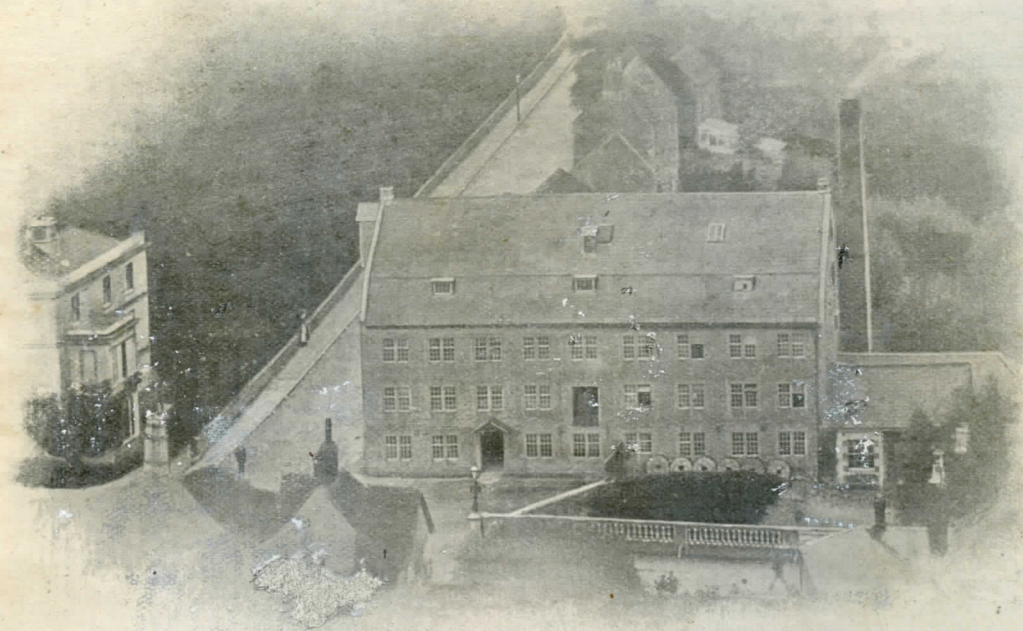




MESSRS. HOSKEN, TREVITHICK, POLKINHORN & CO., LD., VALLETORT MILLS, PLYMOUTH.

Erected on the site of the old mill destroyed by fire. These Mills contain a complete Roller Milling Installation on the "Simon" System, with full equipment of Wheat Washing, Drying and Cleaning Machinery.

Adjoining the Mill is a large Silo Granary, with a holding capacity of about four thousand tons of wheat. This was also erected by Henry Simon, Ltd., during the past year. The Silo is in direct communication with the dock quay by means of bands passing underneath the street.



MESSRS. COLLEN BROS.' FLOUR MILL, CHIPPENHAM.

* This Mill was newly erected in the year 1817 on the site of the old mill which was burned down. It was fitted with eight pairs of millstones and the best machinery obtainable at that time. The Mill was re-constructed to the roller system by Henry Simon in 1893, and has been in the occupation of the present firm and their father (the late Mr. Daniel Colleen) since 1837.

Messrs. Colleen Bros. have kindly allowed us to reproduce a very interesting old rent receipt for Chippenham Mill dated as long ago as 8th December, 1670. At the same time, it is hardly necessary to mention that the amount of rent which was then (according to this receipt) £90 per annum is altogether different to the rental at the present time. Messrs. Colleen Bros. are fortunate to have such an interesting old relic of their business in their possession.

December the 8th 1670.

Received of Gabriel Playsted the sum of

Messrs. Colleen Bros. have written to Henry Simon, Ltd., as follows:—

"We are pleased to inform you that we are perfectly satisfied with the work that you have done for us. I followed your advice as to size a