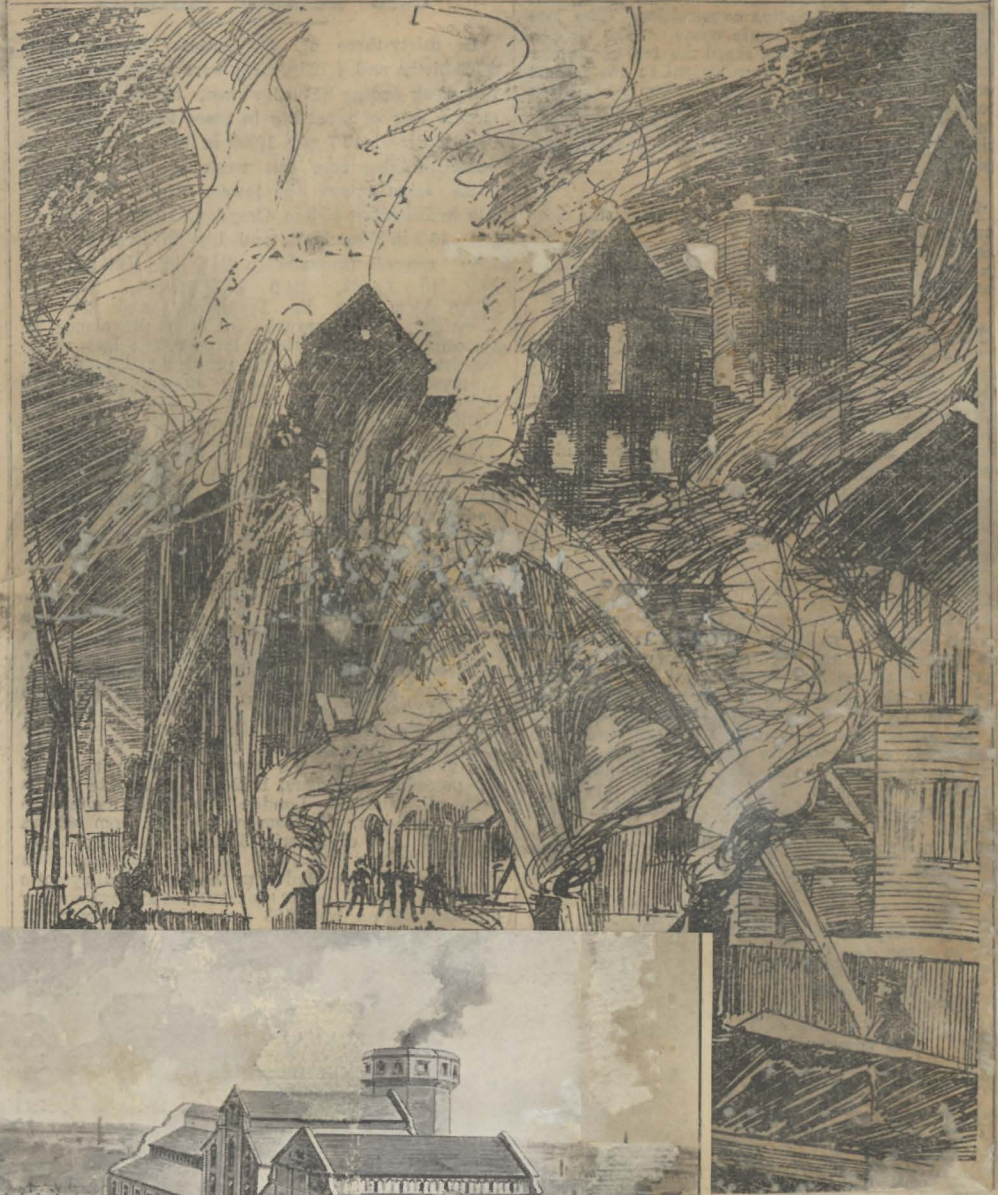


60 31

GREAT FIRE AT BATTERSEA.

The immense granary premises of Messrs. Marriage, Neave, and Co., Limited, flour mills proprietors, in Anhalt-road, Battersea, were discovered to be on fire at a quarter to one o'clock yesterday morning, and a conflagration resulted which kept the firemen at work till late in the day. The premises face the river, and the authorities were enabled to order the "A" and "B" floats to the scene from Pimlico and Charing Cross piers. At two o'clock a tremendous fire, which was illuminating all London, was burning. Captain Simonds, who, with the second officer, Mr. Gamble, had arrived at the scene from Southwark headquarters in a hose van containing 1,000 feet of spare hose, got nine steamers to work to supplement the efforts of the floats and the deliveries from four hydrants which had been set to work in the first stages of the fire. Daylight had broken before the fire could be mastered, and long after that the brigade had to keep working.

We are informed that the fire was confined to one of the buildings containing grain, and did not extend to the flour mills or to the other grain warehouses, so that the manufacture and delivery of flour will go on as usual.



MESSRS. MARRIAGE, NEAVE & CO. LD., ALBERT BRIDGE MILL, BATTERSEA.

Henry Simon, Manchester